

Shepard's Farm Preserve

Preserve Etiquette

- Be safety conscious; use trails at your own risk.
- No unauthorized motorized vehicles.
- Dogs on leash / voice command at all times.
- Preserve closes at dusk.
- Carry out what you have carried in.
- Respect wildlife, observe quietly from a distance.
- Hunting is prohibited on the 19 acres of Shepard's Farm Preserve.
- No campfires, no camping

User Information



Art Enthusiasts

Enjoy six Bernard Langlais sculptures installed along the Detert Trail.



Dog Owners

Please clean up after your dogs. Waste bags are available at the Shepard's Farm Preserve kiosk.



Hikers

Easy to moderate hiking. 2 miles of wooded trails and open fields, connecting with the 2.3-mile Witt's End Trail.



Paddlers

Launch at the public landing on Crockett Ridge Road and head NE to Witt Swamp.



Kite Flyers

Enjoy the winds over Crockett Ridge from the Preserve.



Mountain Bikers

Enjoy all the trails. Please defer to walkers, runners, skiers, and other trail users.



Nordic Skiers

Enjoy an ungroomed wilderness ski through the Preserve to Witt's End Trail.



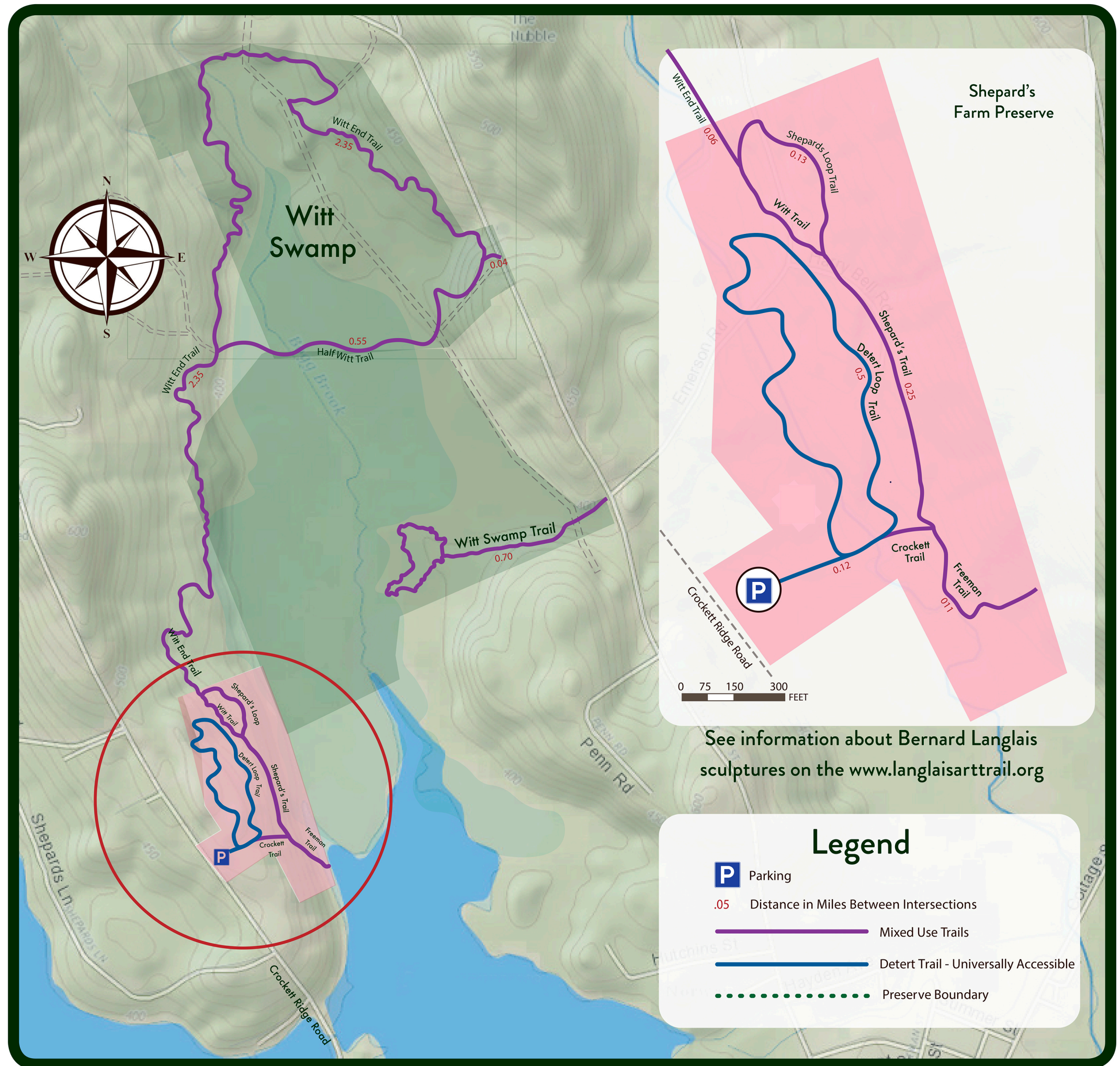
Sledding

The open, gentle hills are perfect for sledding. Conditions may vary, use caution, helmets recommended.



Snowshoers

Explore all the trails and open fields.



See information about Bernard Langlais sculptures on the www.langlaisarttrail.org