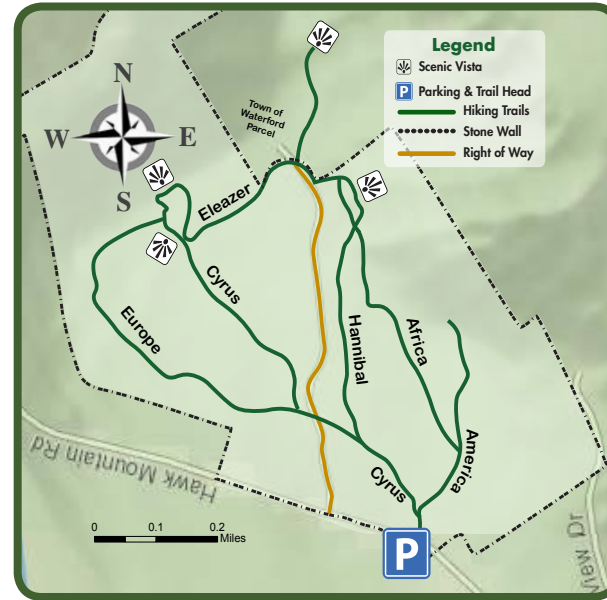




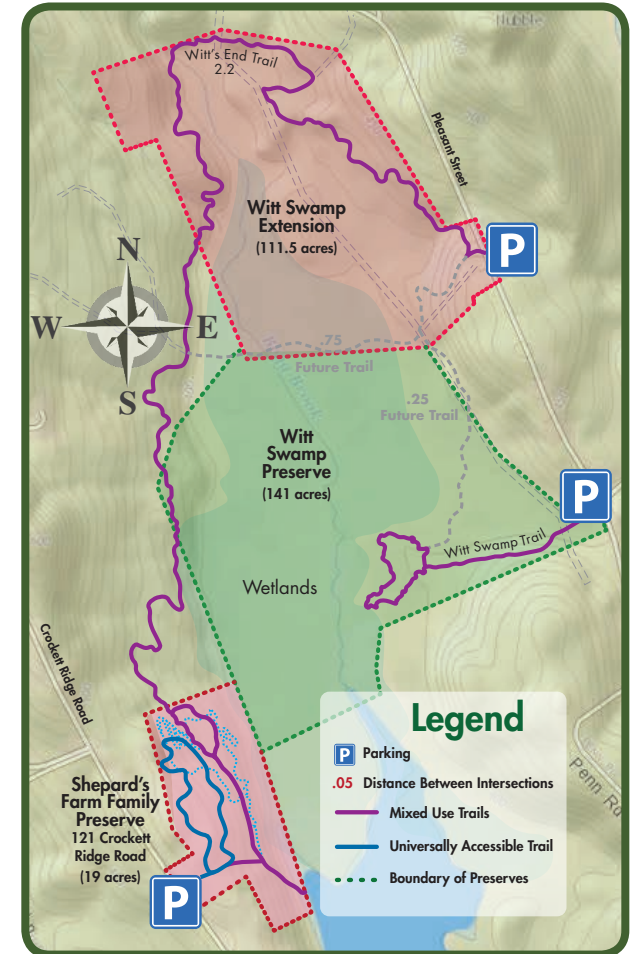
## Hatch Preserve at Hawk Mountain

(3 miles of trails, gentle to moderate difficulty)  
Hawk Mountain Road, Waterford



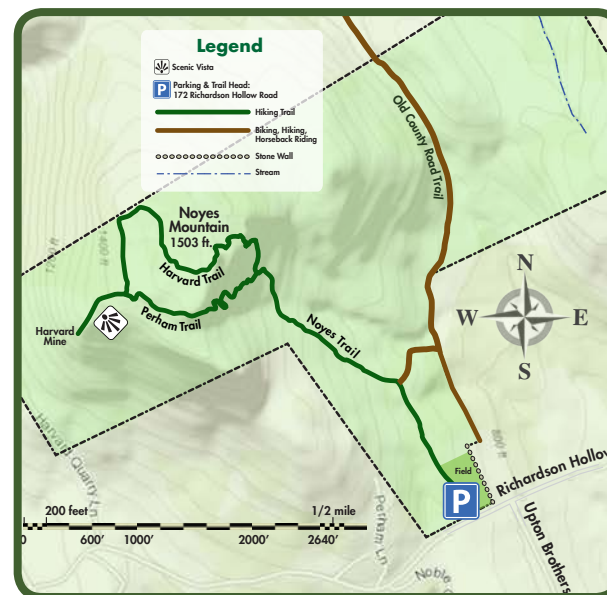
## Shepard's Farm Preserve

(4 miles of mountain biking trails, 1/2 mi. ADA)  
121 Crockett Ridge Road, Norway



## Noyes Mountain Preserve

(3 miles of trails, moderate difficulty)  
172 Richardson Hollow Road, Greenwood



	Hatch Preserve	Noyes Mountain	Roberts Farm	Shepard's Farm	Twin Bridges	Virgil Parris
	●	●	●	●	●	●
		●	●	●		
	●	●	●	●	●	●
	●	●	●	●	●	●
			●	●		
	●	●	●	●	●	●
					●	●

## Preserve & Trail Etiquette

- Be safety conscious; use trails at your own risk
- No unauthorized motorized vehicles
- Stay on trails, avoid short cuts
- Please report all accidents
- Prepare for weather with food, clothing, water
- No walking or snowshoeing on groomed trails
- Dogs on leash/voice command at all times
- Please, no dogs on groomed ski tails
- Preserve closes at dusk
- Carry out what you have carried in
- No campfires, no camping





## Roberts Farm Preserve

(7mi of groomed trails, 1mi single track, 1/2mi ADA trail)

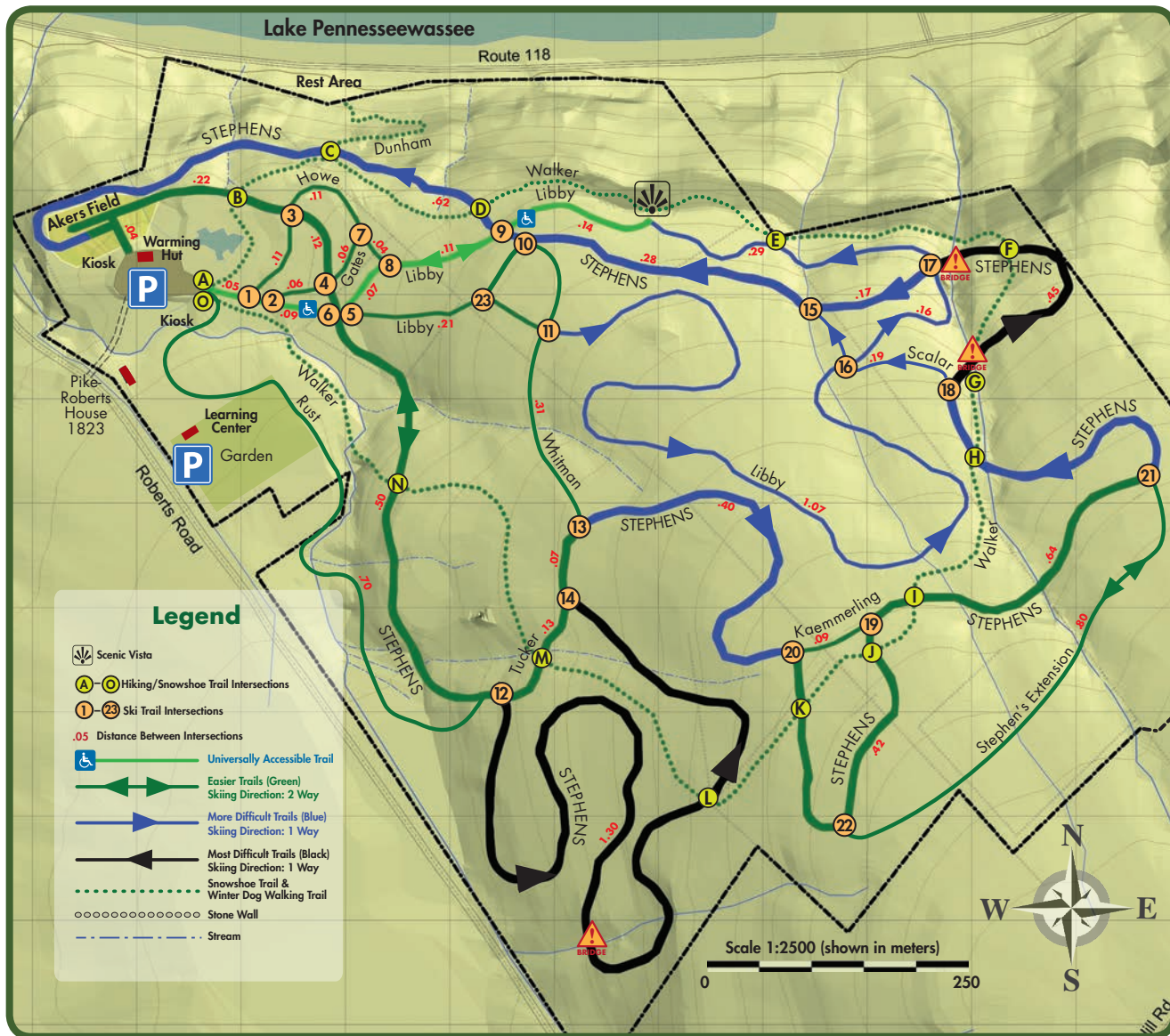
64 Roberts Road, Norway (EV Charging available)

## Warming Hut Winter Hours

Saturday & Sunday 10–4 & School Holidays 10–2

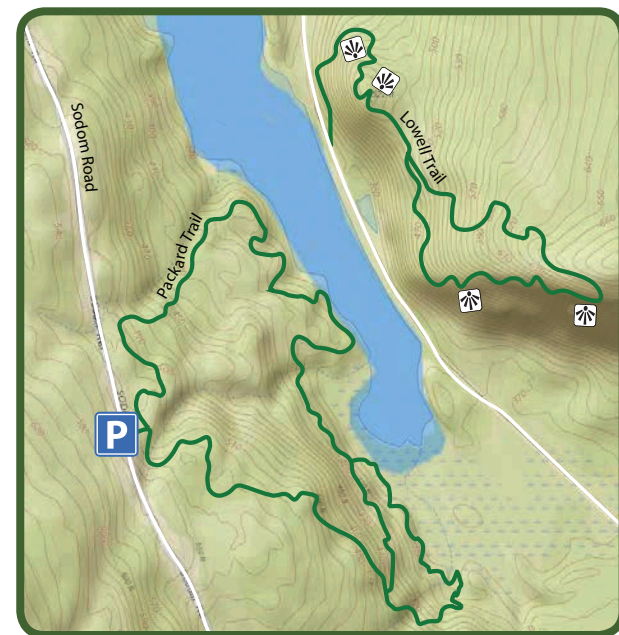
Free equipment loan when warming hut is open.

Trail use is free. We welcome donations to help support trail grooming and plowing.



## Virgil Parris Forest (Two 2-mile loop trails)

Sodom Road, Buckfield



## Twin Bridges Preserve

(5 miles of trails, gentle woods)

Route 117 at Crooked River, Otisfield

